



UNESCO/IOC – NOAA ITIC Training Program in Hawaii (ITP-TEWS Hawaii)
TSUNAMI EARLY WARNING SYSTEMS
AND THE PACIFIC TSUNAMI WARNING CENTER (PTWC) ENHANCED PRODUCTS
TSUNAMI EVACUATION PLANNING AND UNESCO IOC TSUNAMI READY PROGRAMME
15-26 September 2025, Honolulu, Hawaii

Tsunami Evacuation Drill

Evacuation Ala Moana Wave 2025 (AMWave25)

AMWave25 Team

Mario Guerra Vera (PUCV, Chile)

Caroline Jackson, Dr. Charles McCreery (PTWC)

Marie Eble, Dr. Laura Kong, Kimberly Maisonet-Gonzales, Christa von Hillebrandt-Andrade (ITIC)

Ardito Kodijat (IOTIC)

Alejandra Gubler (CIGIDEN, Chile)

Dr. Yoshiki Yamazaki (Univ of Hawaii)



Overview and Exercise Plan

☐ **Goal:**

- Evacuate out of Tsunami Hazard Zone before tsunami arrives

☐ **Objectives:**

- Demonstrate efficiency of evacuation, including
 - ☐ Challenges in finding the fastest routes
 - ☐ Challenges for sight-impaired evacuation
 - ☐ Consequences when evacuation is not immediate
- Evaluate available hazard information, including usability of maps, electronic information services, and access to information

☐ **Conduct**

- 4 groups of 7-9 participants are inside hazard zone and must reach Assembly Location before wave arrives

Post-Exercise Evaluation

- ❑ **Summarize, by an animation, evacuation of 4 groups to the Assembly Location.**
- ❑ **After drill, participants asked to reflect on:**
 - Were the Alerts timely, useful, understandable, actionable?
 - Were maps that were available clear and easy to follow?
 - Were the routes that Group selected clear and easy to follow, and realistic in terms of time required and distance to travel?
 - What obstacles were encountered (urban, physical, social)?
 - How could the evacuation process be improved?



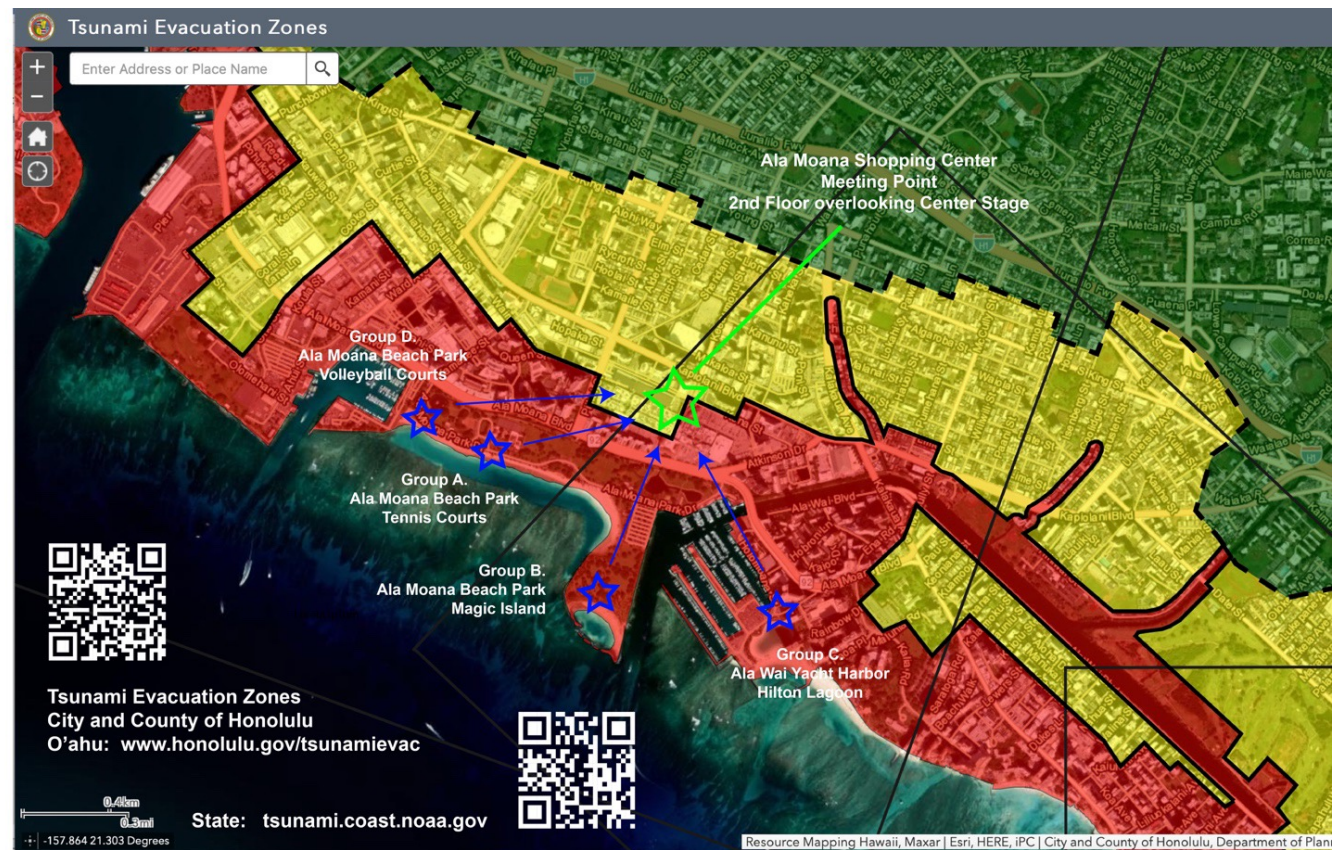
Breaking News:

A powerful earthquake of magnitude **8.1** has struck the Kona region of the Big Island, Hawai'i. Authorities are assessing potential damage and aftershocks, and residents are urged to stay alert for official updates and possible tsunami warnings.

International Tsunami Information Center



Overview



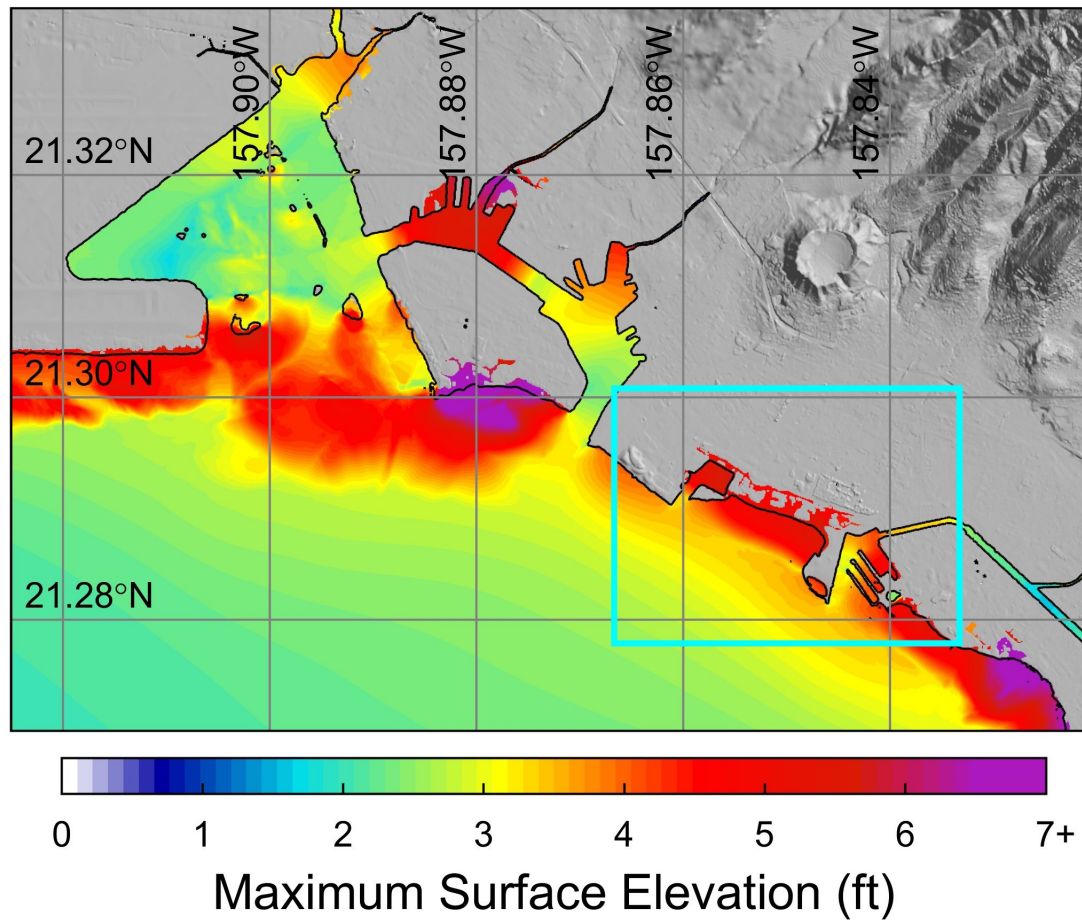
MSEL (Master Schedule of Events List)

Time	Event	Notes
1145-1230	Overview, Instructions, Preparations (Evac route planning)	AMWave25 Team informs, Groups 1-D Prepare
1515-1545	Clean up - Pier 38	Need to remove remove trash, reset tables/chairs, remove power strips, clear snacks, etc
1545	Leave Pier 38	
1600 - 1630	Move to Starting Locations	
	Bus drop off 1 (public bus stop, AMBP) and 2 (near Hilton Lagoon)	
	Bus drop off 1 to Starting Locations by walk and/or car	Group D (walk to start), Group A (transport by car) Group B (transport by car, walk to start)
	Bus drop off 2 to Starting Locations by walking	Group C
	Bus drop off 3 (AMH)	Marie, anyone not wanting to participate Proceed to Assembly Location
1630-1700	'Free' time to prep	
1700	! Earthquake ! (tsunami alert messages)	WhatsApp alert dissemination
	Evacuate by chosen routes	
1730-1745	Meet at Assembly Location	2nf flr overlooking Ala Moana Center Stage (bleacher seats mountain side)
1800	Congratulations	Mai Tai's, Ala Moana Terrace (4th floor)
	Return to AMH	



Imagery ©2025 Airbus, CNES / Airbus, Maxar Technologies, Map data ©2025 Google 500 ft

Scenario: M8.1 off-Kona, Big Island



Yoshiki Yamazaki, Univ of Hawaii

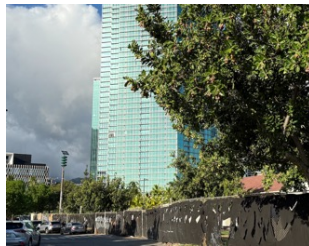
Starting Locations – start at beach / water

- **Group D**
Chip



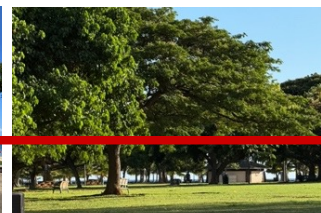
VB courts

- **Group A**
Laura



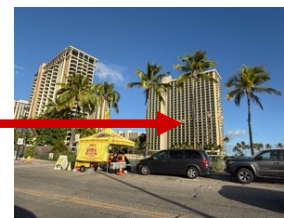
Lifeguard 1C

- **Group B**
Kimberly



Ocean lagoon

- **Group C**
Christa, Ardito



Magic Island

Hot Dog stand

4 Groups (A, B, C, D) - 1 Local Resource / Facilitator

Group A

Ala Moana Beach Park, Tennis Courts

ITP Facilitator: Laura Kong (A32)

Aruba – Rodney Tromp (A1)

Chile – Alfredo Teixido Diaz (A6)

Dominica – Primrose David (A9)

Honduras – Lidia Torres Bernhards (A16)

New Zealand – Gerry Blair (A19)

Saint Lucia – Chadric Prince Fauche (A24)

Tonga – Mafi Penisoni (A28)

Tonga – Petelo Taulak (A29)

Group B

Ala Moana Beach Park, Magic Island. ITP Facilitators: Mario

Guerra Vera (B5), Kimberly Maisonet-Gonzalez

Bahamas – Suzane Dorsett (B2)

Ecuador – Ruben Dario Caba Satama (B10)

FSM (Pohnpei) – Charles Johnson Jr. (B13)

Fiji – Filmone Rokoiri (B14)

Nauru – Ricky Joram (B18)

Palau – Waymine Towai (B21)

Solomon Islands – Lenny Konamauri (B26)

Tuvalu – Simoea Tiute (B30)

Group C

Hilton Lagoon, Ala Wai Yacht Harbor. ITP Facilitators:

Ardito Kodjiat (C33) and Christa von Hillebrandt (C35)

Brunei – Muhammad Wajeeh (C3)

China – Jianyu Shi (C7)

Ecuador – Fernando Villacis Calderon (C11)

Honduras – Mario A. Martinez Valdes (C15)

Indonesia – Fajar Tri Haryanto (C17)

Philippines – Nane M. Danlag (C22)

Seychelles – Doreen Legemalila (C25)

Puerto Rico – Gerardo Andrade, Guest (C36)

Group D

Ala Moana Beach Park, Volleyball Courts

ITP Facilitator: Chip McCreery (D34)

Costa Rica – Alejandra Acuna Piedra (D8)

Brunei – Muhammad Asri Akmal (D4)

FSM (Chuuk) – Justin P. Fritz (D12)

New Zealand – Gema Redondo de la Morena (D20)

Philippines – Christian N. de Luna Andres (D23)

Tokelau – Lakena Gasologa (D27)

Tuvalu – Tenea Tiute (D31)



UNESCO/IOC – NOAA ITIC Training Program in Hawaii (ITP-TEWS Hawaii)
TSUNAMI EARLY WARNING SYSTEMS
AND THE PACIFIC TSUNAMI WARNING CENTER (PTWC) ENHANCED PRODUCTS
TSUNAMI EVACUATION PLANNING AND UNESCO IOC TSUNAMI READY PROGRAMME
15-26 September 2025, Honolulu, Hawaii

Thank You

Muchas Gracias

AMWave25 Team

Mario Guerra Vera (PUCV, Chile)

Caroline Jackson, Dr. Charles McCreery (PTWC)

Marie Eble, Dr. Laura Kong, Kimberly Maisonet-Gonzales, Christa von Hillebrandt-Andrade (ITIC)

Ardito Kodijat (IOTIC)

Alejandra Gubler (CIGIDEN, Chile)

Dr. Yoshiki Yamazaki (Univ of Hawaii)

