

# **SINAMOT PROGRAM** **(NATIONAL TSUNAMI** **MONITORING SYSTEMS)**

**Alejandra Acuña Piedra**

Geography

Project technician SINAMOT-UNA





## **SINAMOT works through the 4 pillars of Early Warning Systems**

**1**

**Tsunami Risk  
Assessment**

**2**

**Detection and Warning**

**3**

**Warning Dissemination**

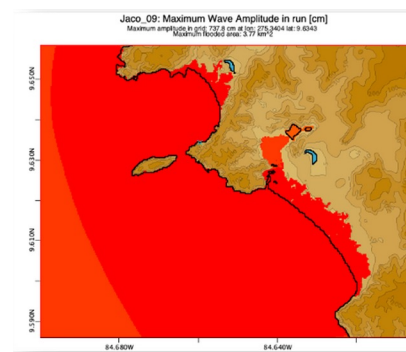
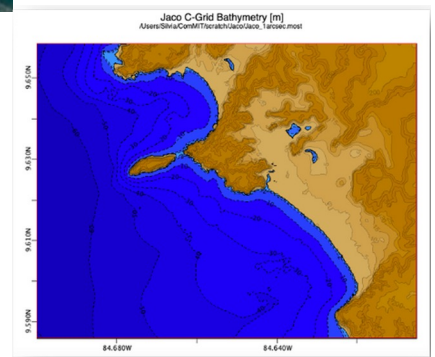
**4**

**Preparedness and Response  
Capabilities**

# 1 2 TSUNAMI HAZARD

## ASSESSMENTS

- Used deterministic approach with multiple scenarios
- Now using stochastic approach
- Tsunami inundation numerical modeling
- Perform bathymetric surveys when possible and needed
- Results also employed officially for land planning and warnings

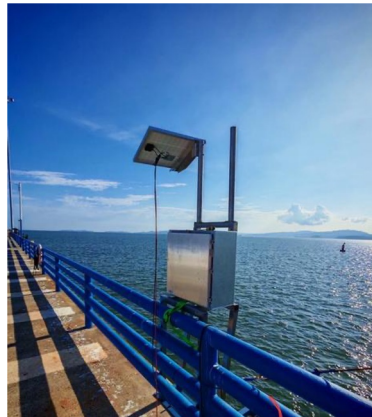


# 1 3 TSUNAMI MONITORING AND WARNING

- We manage the sea level stations sending data to the Global Tsunami Monitoring System
- We are the National Tsunami Warning Center (NTWC) for Costa Rica
- TNC is Silvia Chacón
- TWFP is CNE



Puntarenas



Cocos Island





# TSUNAMI EVACUATION MAPS AND PLANS PROJECT

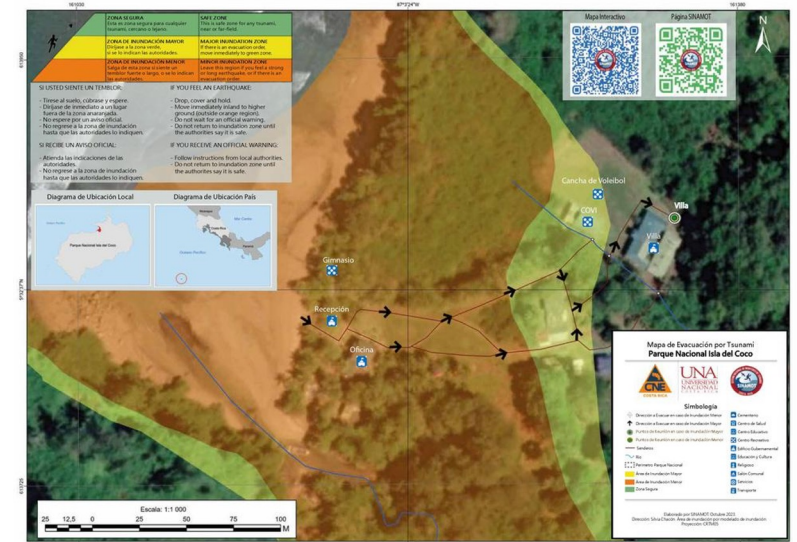
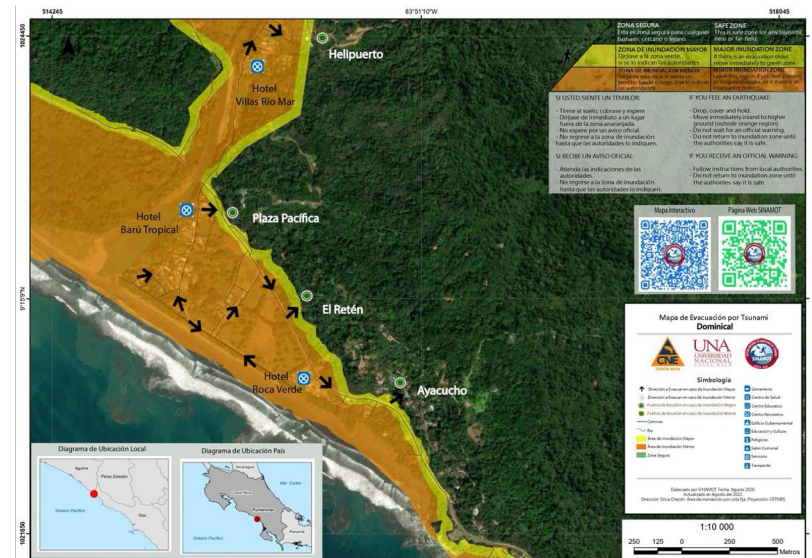
•Funded by the National Emergency Commission (CNE)

since 2016

•So far we have built 73 maps for at both shores (of 300+ coastal communities)

•Using GIS and participative cartography ensures communities commitment.

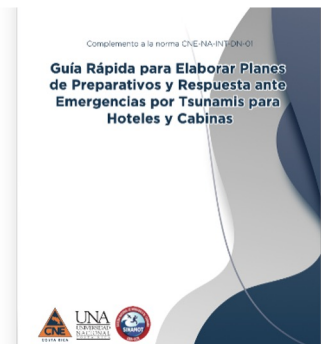
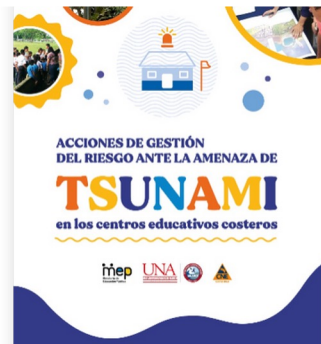
Now working at Municipality level to increase coverage



# TSUNAMI PREPAREDNESS<sup>4</sup>

## WE WORK WITH THE PEOPLE

- Communities
- Public institutions: 1st responders, kindergartens, schools, Ministries of Education, Transport, Environment, Tourism, etc.
- Private institutions such as hotels, ports, marinas, etc.



# PROJECT WITH NATIONAL PARK

- To increase tsunami preparedness and reduce climatic vulnerability
- National Parks are a main touristic attraction
- Work with rangers, touristic guides and neighboring communities
- Linked with pilot project from MAB & TSU programs from UNESCO in Manuel Antonio
- Submitted as Decade Action

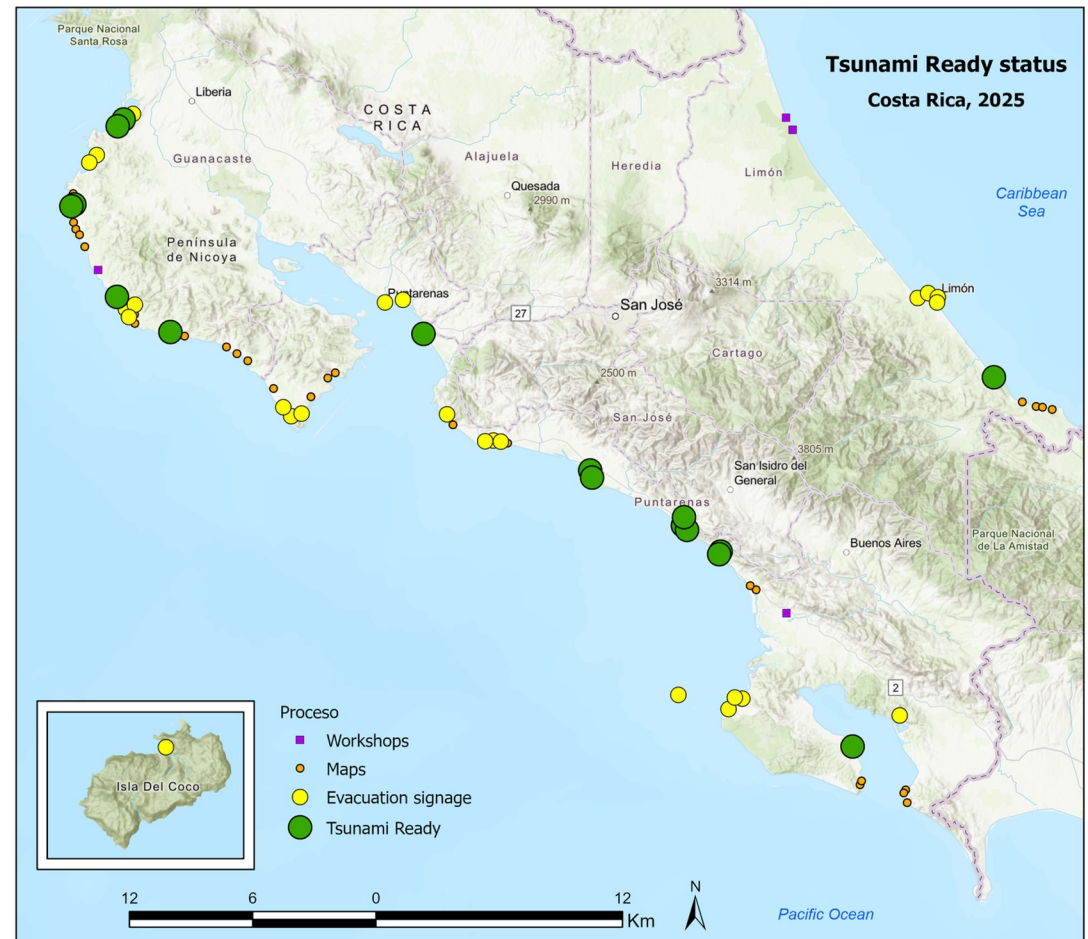






# TSUNAMI READY

- We have recognized  
11 communities
- Many more to come!





# THANK YOU

---



[maria.acuna.piedra@una.cr](mailto:maria.acuna.piedra@una.cr)  
[sinamot@una.ac.cr](mailto:sinamot@una.ac.cr)



[www.sinamot.una.ac.cr](http://www.sinamot.una.ac.cr)