



**DBCP Capacity Building Workshop on Ocean Observations for
Operational Services in the Indian Ocean Region**

National Reports

Thailand

**05 - 07 August 2025
Hyderabad, India**



1. Existing Capacities/Activities for Observation /Forecasting

Marine Forecast

Daily sea state forecast in Thai's shipping areas and commercial ports

The sea state is reported in Beaufort's scale for each areas



Marine Forecast

Sea State along Shipping Route

Since 07.00 LT 23 APRIL 2025 to 07.00 LT 24 APRIL 2025

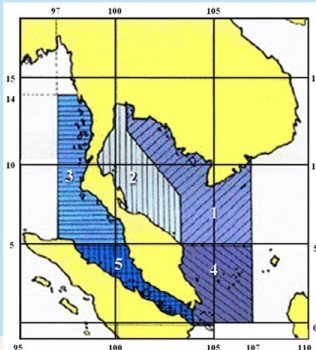
AREA 2

The Upper of Gulf Thailand

Sea state is slight to moderate with small wavelets and white horses. A significant wave height is about 0.5-1.0 meters and maximum wave height can reach 1.5 meters.

The Lower of Gulf Thailand

Sea state is slight to moderate with small wavelets and white horses. A significant wave height is about 0.5-1.0 meters and maximum wave height can reach 1.5 meters.



AREA 1

Yuan Pointed

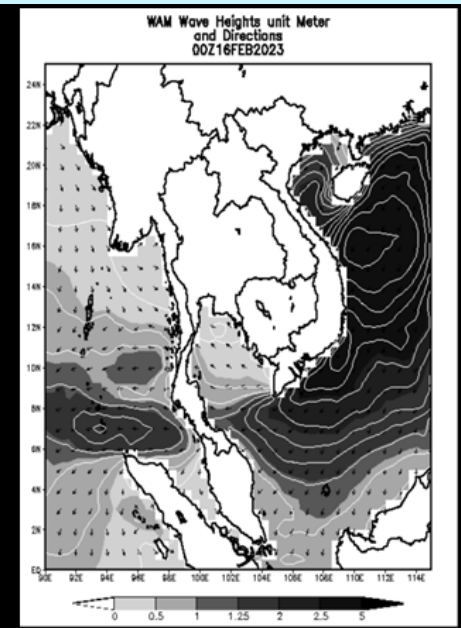
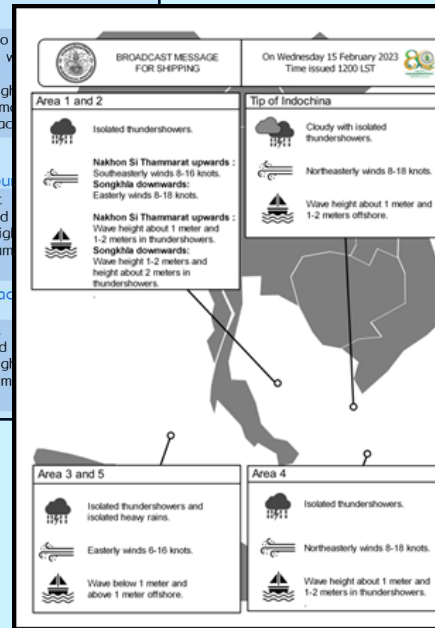
Sea state is slight to moderate with small wavelets and white horses. A significant wave height is about 0.5-1.0 meters and maximum wave height can reach 1.5 meters.

Rayong, Chanthaburi

Sea state is slight to moderate with small wavelets and white horses. A significant wave height is about 0.5-1.0 meters and maximum wave height can reach 1.5 meters.

Samut Prakan, Chonburi

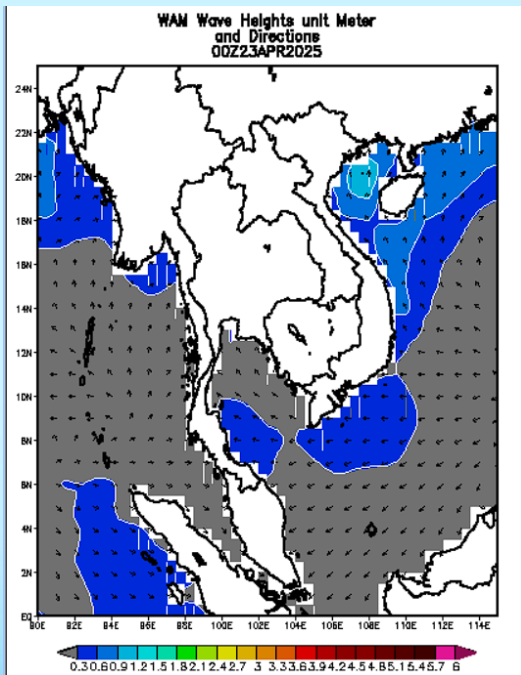
Sea state is slight to moderate with small wavelets and white horses. A significant wave height is about 0.5-1.0 meters and maximum wave height can reach 1.5 meters.



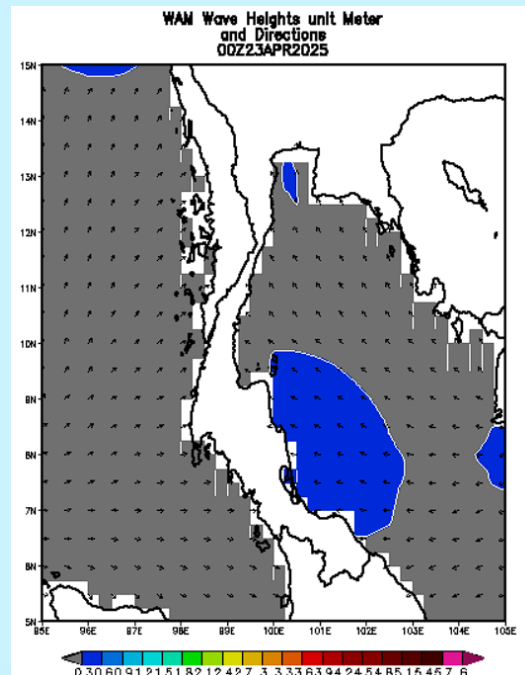
THAI MARINE METEOROLOGICAL CENTER
THAI METEOROLOGICAL DEPARTMENT, MINISTRY OF DIGITAL ECONOMY AND SOCIETY



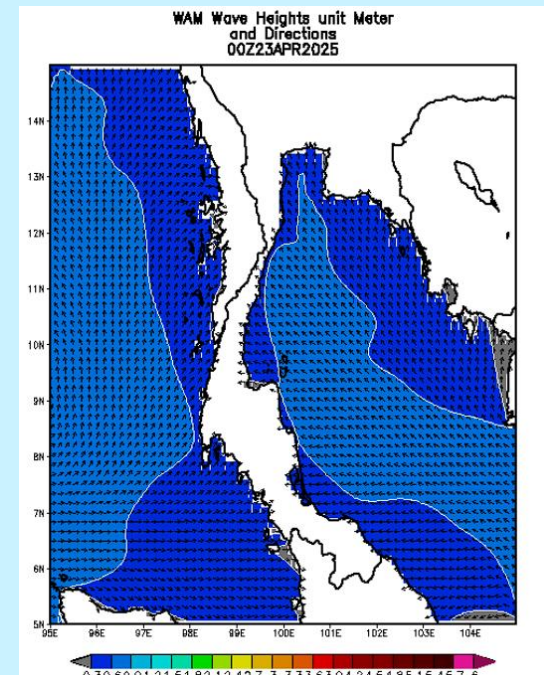
Ocean model WAM



0.5-degree

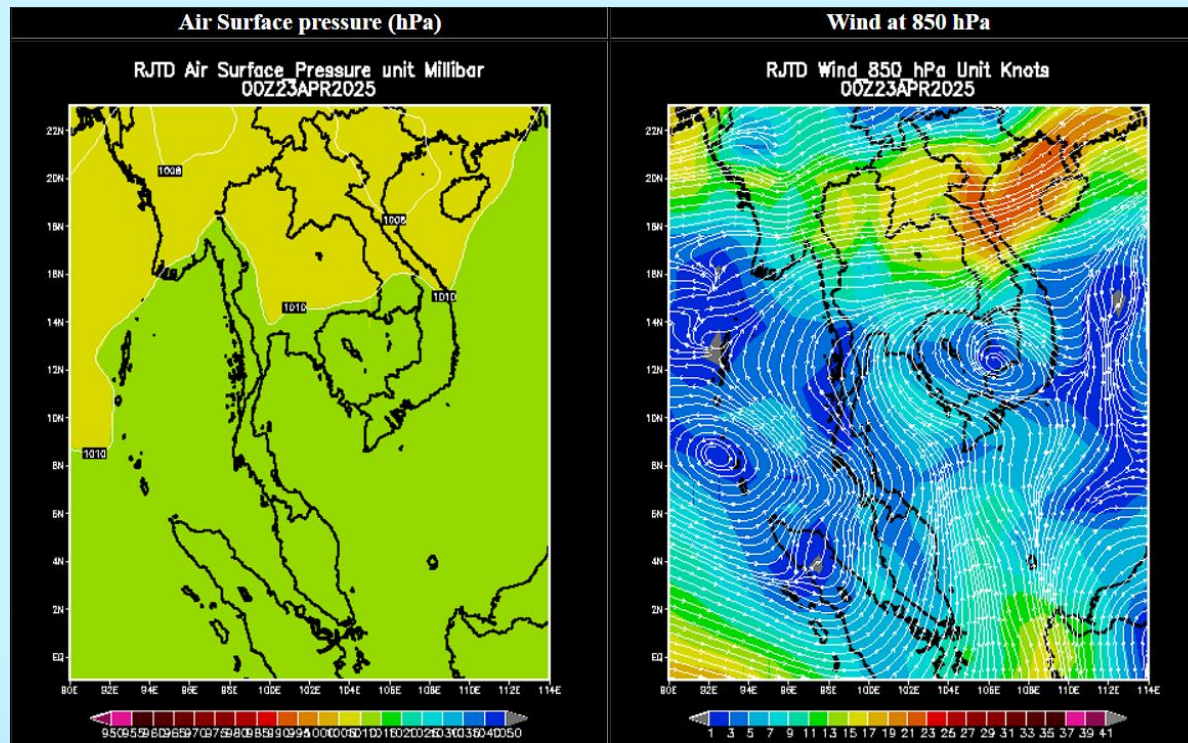


0.25-degree

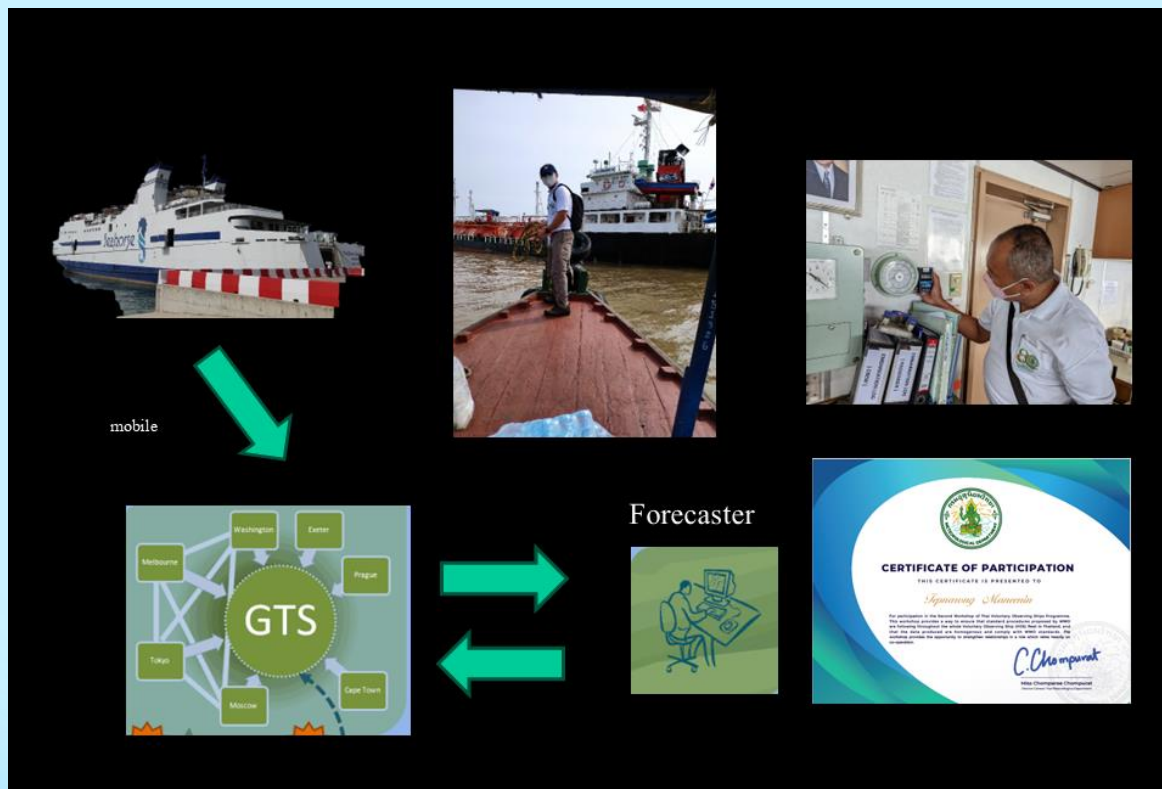


0.083-degree

RJTD storm surges model



Port Meteorological Officer (PMO)





- Insufficient marine observation data coverage in our area
 - VOS
 - SARAL-AltiKa (MOSDAC)
 - Sea side station (few)
 - Reanalysis data